

T B S E R I E S

indelB

trouble shooting

TB_15_18_(DC)_28-11-2018

T B S E R I E S

3	ERROR E1
4	ERROR R2
5	ERROR R3
6	ERROR R4
7	ERROR R5
8	ERROR R6
9	ERROR -
10	HOW TO REPLACE THE TEMPERATURE SENSOR
11	HOW TO REPLACE THE FAN
12	HOW TO REPLACE THE PCB
13 - 14	HOW TO REPLACE THE ECU
15 - 16	HOW TO REPLACE THE DISPLAY
17	HOW TO REPLACE THE LID
18	HOW TO REPLACE THE LIGHT BULB

indelB

TB_15_18_28-11-2018

- **ERROR E1: Battery protection cut-out**

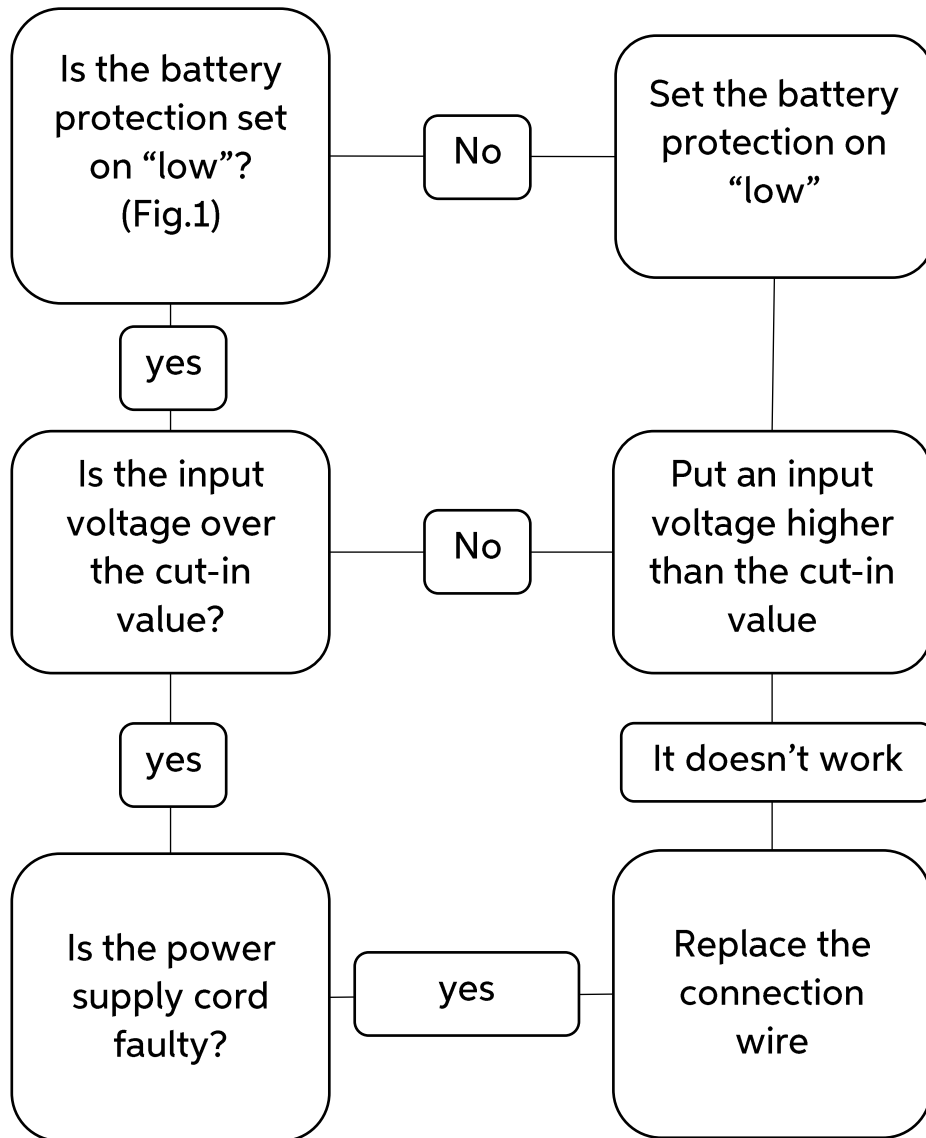


Fig. 1

- **ERROR R2: Fan over-current cut-out**

This error is caused by an over-current that arrived at the fan. In this case you must replace the fan (see “How to replace the fan”).

- ERROR R3: Motor start error

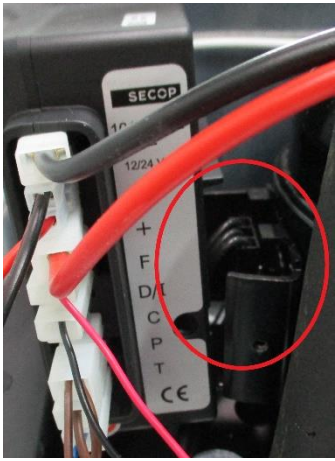
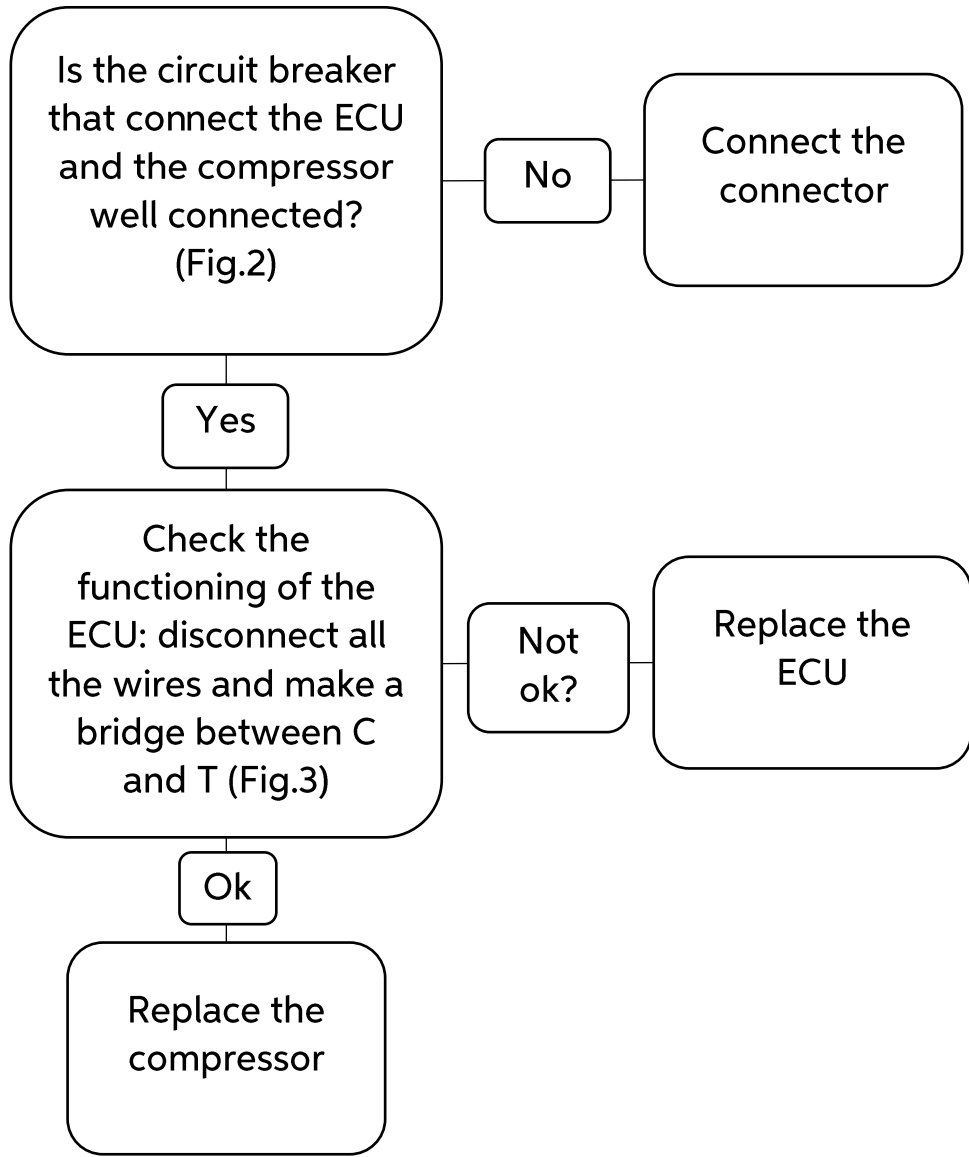
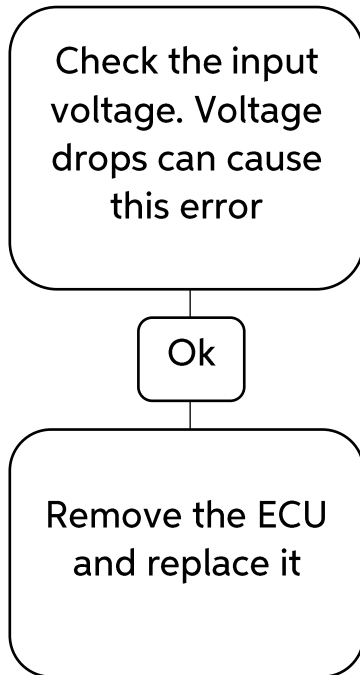


Fig. 2

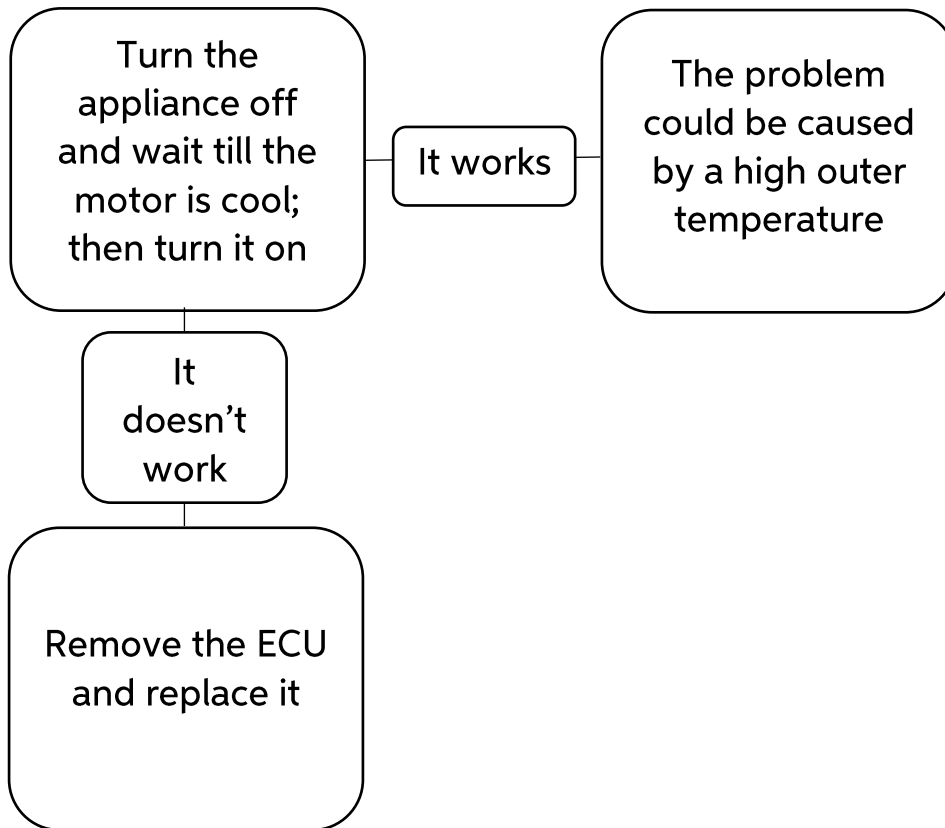


Fig. 3

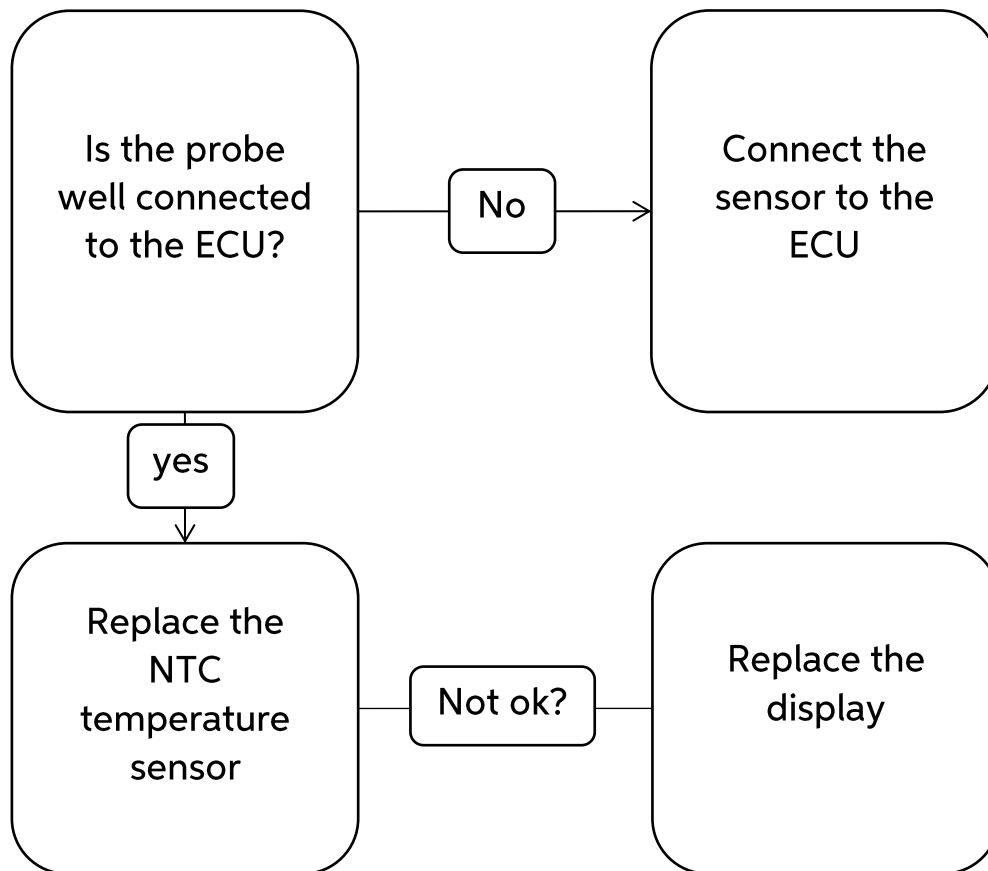
- ERROR R4: Minimum motor speed error



- ERROR R5: Thermal cut-out of electronic unit



- ERROR R6: Faulty temperature sensor



- ERROR - : No communication between display and ECU

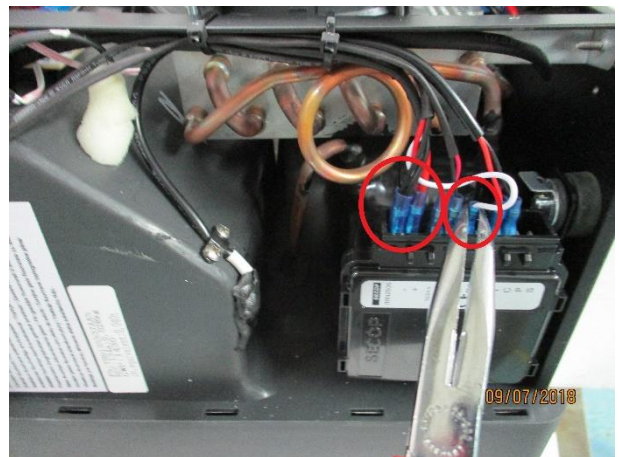
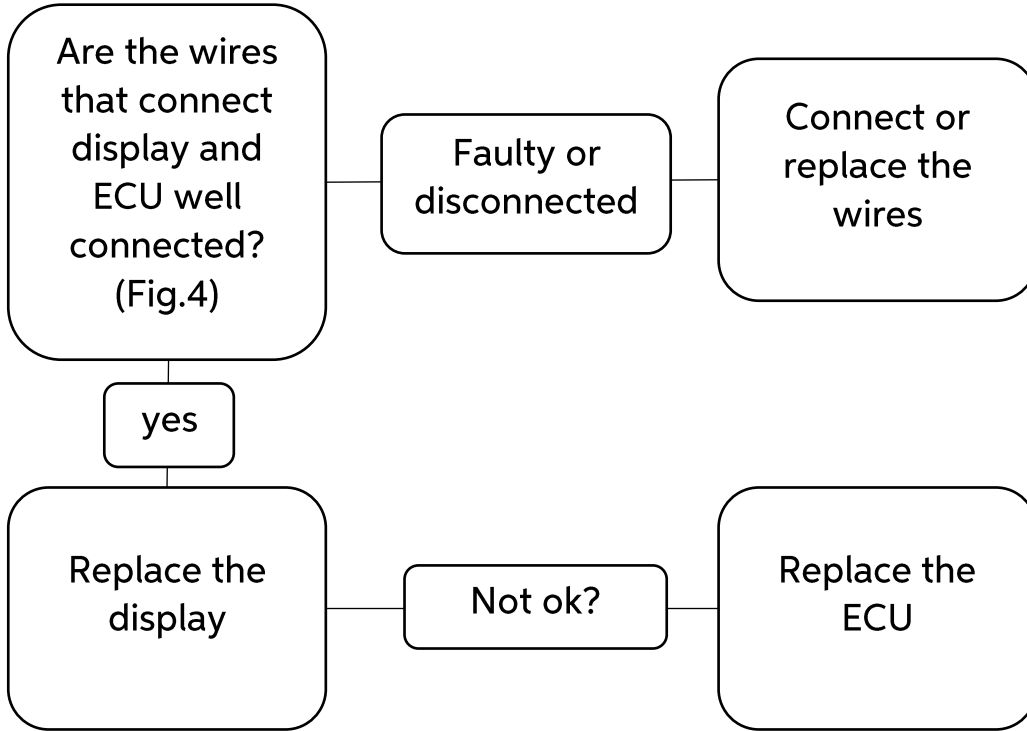


Fig. 4

HOW TO REPLACE THE TEMPERATURE SENSOR



1. Cut the label and remove it



2. Unscrew the bolts fixing the cover (7 bolts)



3. Remove the carter (pull strongly)



4. Unscrew the 2 bolts fixing the sensor



5. Disconnect the wire that connect the temperature sensor and the ECU, remove the sensor and reverse the procedure to replace it

HOW TO REPLACE THE FAN



2. Cut the label and remove it



2. Unscrew the bolts fixing the cover (7 bolts)



3. Remove the carter (pull strongly)



4. Unscrew the 2 bolts fixing the fan, disconnect the wires connecting the fan and the ECU and reverse the procedure to replace it

HOW TO REPLACE THE PCB



1. Cut the label and remove it



2. Unscrew the bolts fixing the cover (7 bolts)



3. Remove the carter (pull strongly)



4. Disconnect the wires, unscrew the 2 bolts and reverse the procedure to replace the PCB

HOW TO REPLACE THE ECU



1. Cut the label and remove it



2. Unscrew the bolts fixing the cover (7 bolts)



3. Remove the carter (pull strongly)



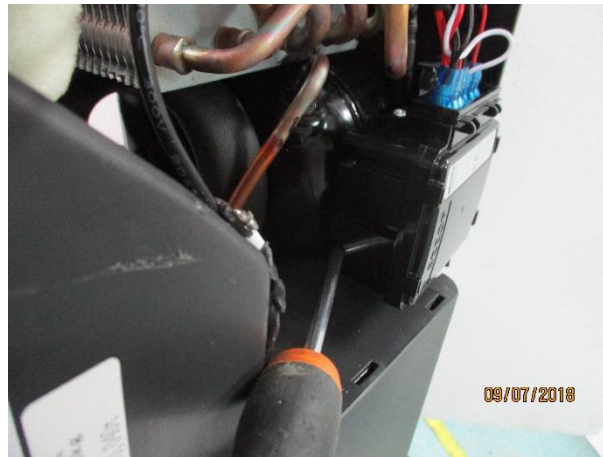
4. Unscrew the 4 bolts highlighted in figure



5. Unscrew the 2 bolts fixing the 2 brackets



6. Unscrew the bolt fixing the ECU



7. Unscrew the bolt fixing the ECU, disconnect all the wires and reverse the procedure to replace it

HOW TO REPLACE THE DISPLAY



1. Cut the label and remove it



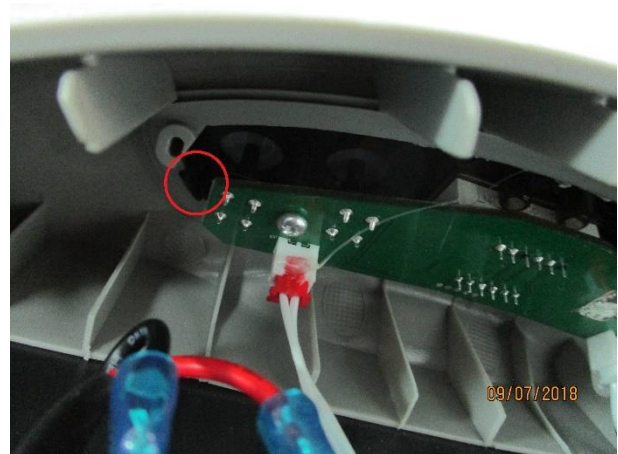
2. Unscrew the bolts fixing the cover (7 bolts)



3. Remove the carter (pull strongly)



4. Press on the interlock to remove the display





5. Press on the electronic board to remove the display, disconnect the wires and replace it with a new display

HOW TO REPLACE THE LID



1. Unscrew the bolt



2. Insert a thin object in the small holes to remove the lid

HOW TO REPLACE THE LIGHT BULB



1. Use a thin object as a lever to remove the light bulb's label, then unscrew the bolts behind it to remove the light bulb